

PCI8664

User's Manual

 **Beijing ART Technology Development Co., Ltd.**

Contents

<i>Contents</i>	1
<i>Chapter 1 Overview</i>	2
<i>Chapter 2 Components Layout Diagram and a Brief Description</i>	4
2.1 The Main Component Layout Diagram	4
2.2 The Function Description for the Main Component	4
2.2.1 Signal Input and Output Connectors	4
2.2.2 Potentiometer	4
2.2.3 Physical ID of DIP Switch	5
2.2.4 Status Indicator	6
<i>Chapter 3 Signal Connectors</i>	7
3.1 Analog Input/Output Connector	7
3.2 Digital Input Connector	8
3.3 Digital Output Connector	9
<i>Chapter 4 Each Signal Connection Method</i>	10
4.1 AD Single-ended Input Connection	10
4.2 Trigger signal input	10
4.3 Digital Input	11
4.4 Digital Output	11
4.5 Methods of Realizing the Multi-card Synchronization	11
<i>Chapter 5 The Instruction Trigger Function</i>	13
5.1 Internal Trigger Mode	13
5.2 External Trigger Mode	13
5.3 Methods of Using AD Continuum and Grouping Sampling Function	15
5.3.1 AD Continuum Sampling Function	15
5.3.2 AD Grouping Sampling Function	15
<i>Chapter 6 Note and Warranty Policy</i>	18
6.1 Notes	18
6.2 Analog Signal Input Calibration	18
6.3 Warranty Policy	18
Products Rapid Installation and Self-check	20
Rapid Installation	20
Self-check	20
Delete Wrong Installation	20

Chapter 1 Overview

In the fields of Real-time Signal Processing, Digital Image Processing and others, high-speed and high-precision data acquisition modules are demanded. ART PCI8664 data acquisition module, which brings in advantages of similar products that produced in china and other countries, is convenient for use, high cost and stable performance.

ART PCI8664 is a data acquisition module based on PCI bus. It can be directly inserted into IBM-PC/AT or a computer which is compatible with PCI8664 to constitute the laboratory, product quality testing center and systems for different areas of data acquisition, waveform analysis and processing. It may also constitute the monitoring system for industrial production process.

Unpacking Checklist

Check the shipping carton for any damage. If the shipping carton and contents are damaged, notify the local dealer or sales for a replacement. Retain the shipping carton and packing material for inspection by the dealer.

Check for the following items in the package. If there are any missing items, contact your local dealer or sales.

- PCI8664 Data Acquisition Board
- ART Disk
 - a) user's manual (pdf)
 - b) drive
 - c) catalog
- Warranty Card

FEATURES

Analog Input

- Input Range: $\pm 5V$, $\pm 10V$, $0\sim 10V$
- 12-bit resolution
- Sampling Rate: $0.01\sim 1MHz$
- Input Channels: 64 (32 pairs of synchronous channels)
- Analog Input Mode: Single-ended
- Data Read Mode: non-empty and half-full inquiry mode
- Memory Depth: 8K word FIFO memory
- Memory Signs: full, non-empty and half-full
- AD Mode: continuum sampling , grouping sampling
- Group Interval: software-configurable, minimum value is sampling period, maximum value is $419430\mu s$
- Loops of Group: software-configurable, minimum value is one time , maximum value is 255 times
- Clock Source: internal clock
- Board Clock Output Frequency: the real sampling frequency of the current AD
- Trigger Mode: software trigger, hardware trigger(external trigger)
- Trigger Type: level trigger , edge trigger
- Trigger Direction: negative, positive, either positive or negative trigger
- Trigger Source: DTR
- Trigger Source DTR Input Range: standard TTL level
- AD Conversion Time: $\leq 0.61\mu s$
- Programmable Gain: 1, 2, 4, 8 (AD8251 default) or 1, 2, 5, 10 (AD8250) or 1, 10, 100, 1000 (AD8253)

- Analog Input Impedance: $>10M\Omega$
- Amplifier Set-up Time: 785nS(0.001%)(max)
- Non-linear error: $\pm 2\text{LSB}$ (Maximum)
- System Measurement Accuracy: 0.01%
- Operating Temperature Range: $0^{\circ}\text{C}\sim 50^{\circ}\text{C}$
- Storage Temperature Range: $-20^{\circ}\text{C}\sim 70^{\circ}\text{C}$

Digital Input

- Input channels: 16
- Electronic standard: TTL compatible
- High level: $\geq 2\text{V}$
- Low level: $\leq 0.8\text{V}$

Digital Output

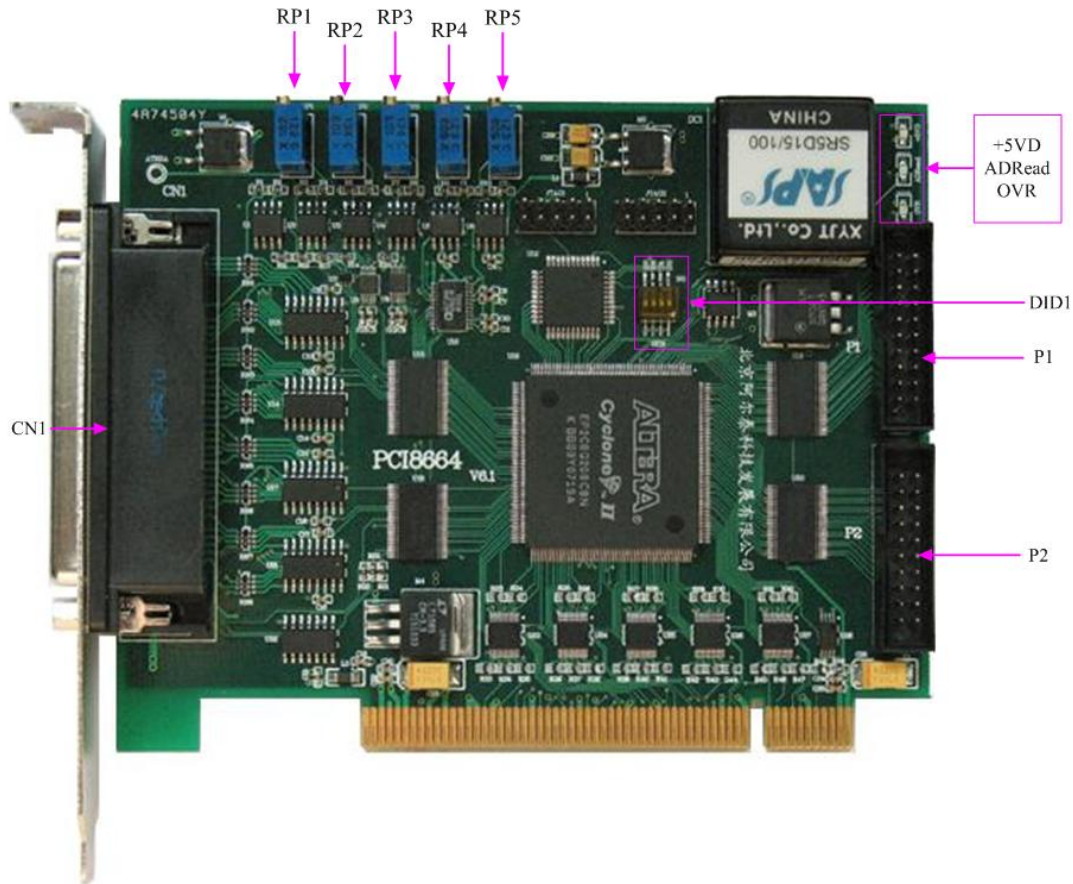
- Output channels: 16
- Electronic standard: TTL compatible
- High level: $\geq 2.4\text{V}$
- Low level: $\leq 0.5\text{V}$
- Initial Value: low Level

Other features

- Board Clock Oscillation: 40MHz
- Board Dimension: 130.5mm (L) x 96mm (W)

Chapter 2 Components Layout Diagram and a Brief Description

2.1 The Main Component Layout Diagram



2.2 The Function Description for the Main Component

2.2.1 Signal Input and Output Connectors

CN1: Analog signal input and output connector

P1: Digital input port

P2: Digital output port

2.2.2 Potentiometer

RP1: Full-scale adjustment of trigger level base value

RP2: Analog input B channel zero-point adjustment potentiometer

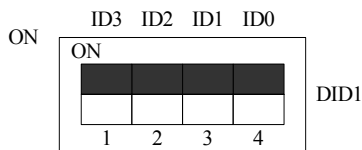
RP3: Analog input A channel zero-point adjustment potentiometer

RP4: Analog input B channel full-scale adjustment potentiometer

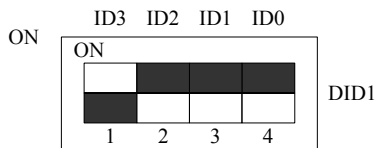
RP5: Analog input A channel full-scale adjustment potentiometer

2.2.3 Physical ID of DIP Switch

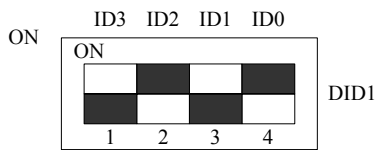
DID1: Set physical ID number. When the PC is installed more than one PCI8664 , you can use the DIP switch to set a physical ID number for each board, which makes it very convenient for users to distinguish and visit each board in the progress of the hardware configuration and software programming. The following four-bit numbers are expressed by the binary system: When DIP switch points to "ON", that means "1", and when it points to the other side, that means "0." As they are shown in the following diagrams: "ID3" is the high bit."ID0" is the low bit, and the black part in the diagram represents the location of the switch. (Test softwares of the company often use the logic ID management equipments and at this moment the physical ID DIP switch is invalid. If you want to use more than one device that are the same type in the same system at the same time, please use the physical ID as much as possible. As for the differences between logic ID and physical ID, please refer to the function explanations of "CreateDevice" and "CreateDeviceEx" of *The Prototype Explanation of Device Object Management Function* in *PCI8664S* software specification).



The above chart shows "1111", so it means that the physical ID is 15.



The above chart shows "0111", so it means that the physical ID is 7.



The above chart shows "0101", so it means that the physical ID is 5.

ID3	ID2	ID1	ID0	Physical ID (Hex)	Physical ID (Dec)
OFF (0)	OFF (0)	OFF (0)	OFF (0)	0	0
OFF (0)	OFF (0)	OFF (0)	ON (1)	1	1
OFF (0)	OFF (0)	ON (1)	OFF (0)	2	2
OFF (0)	OFF (0)	ON (1)	ON (1)	3	3
OFF (0)	ON (1)	OFF (0)	OFF (0)	4	4
OFF (0)	ON (1)	OFF (0)	ON (1)	5	5
OFF (0)	ON (1)	ON (1)	OFF (0)	6	6
OFF (0)	ON (1)	ON (1)	ON (1)	7	7
ON (1)	OFF (0)	OFF (0)	OFF (0)	8	8
ON (1)	OFF (0)	OFF (0)	ON (1)	9	9
ON (1)	OFF (0)	ON (1)	OFF (0)	A	10
ON (1)	OFF (0)	ON (1)	ON (1)	B	11
ON (1)	ON (1)	OFF (0)	OFF (0)	C	12
ON (1)	ON (1)	OFF (0)	ON (1)	D	13
ON (1)	ON (1)	ON (1)	OFF (0)	E	14
ON (1)	ON (1)	ON (1)	ON (1)	F	15

2.2.4 Status Indicator

+5VD: 5V digital power supply indicator, on for normal.

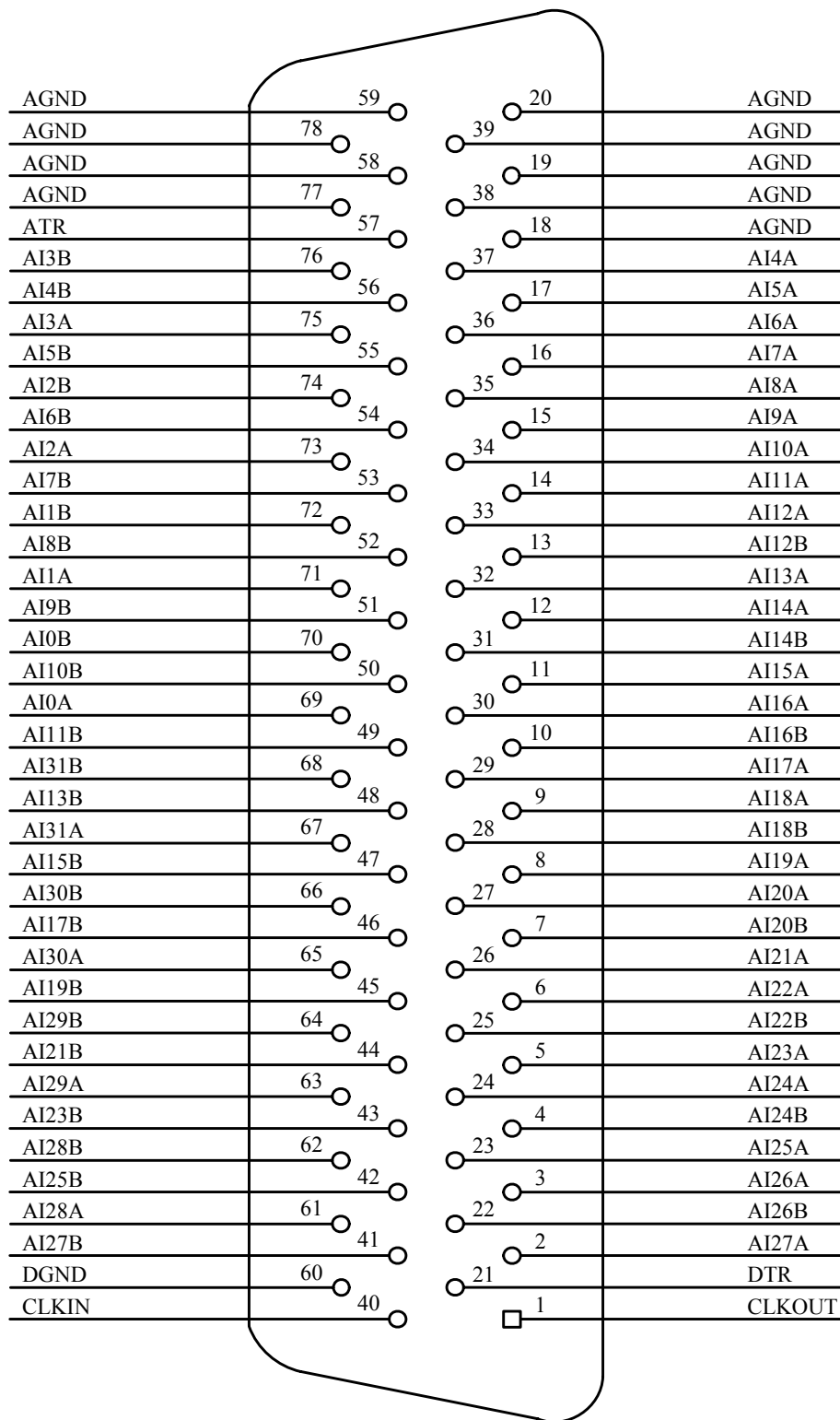
OVR: FIFO overflow indicator, on for FIFO overflow

ADRead: read FIFO indicator. It is reading FIFO when the light is flashing.

Chapter 3 Signal Connectors

3.1 Analog Input/Output Connector

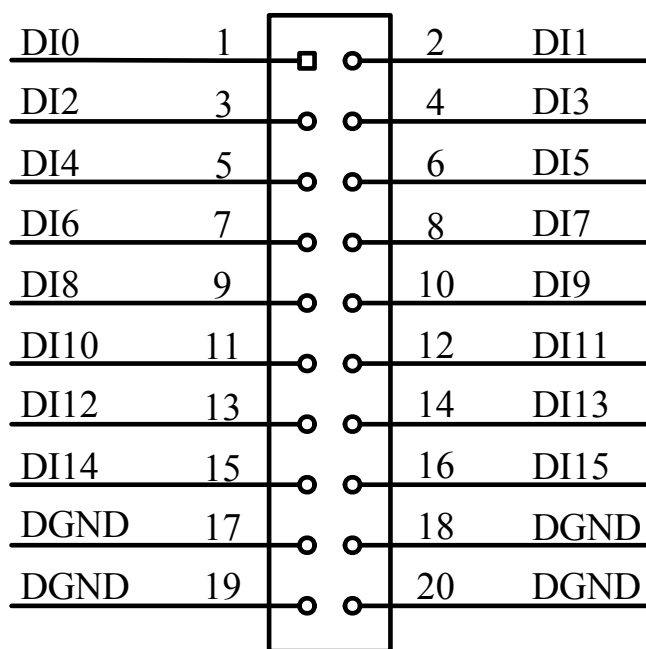
CN1: 78-pin D-type



Pin definition

Name	Color	Description
AI0A~AI31A AI0B~AI31B	Input	Analog input pins, corresponding to 64-ch single-ended; AI0A and AI0B independent synchronous channel, AI1A and AIAB independent synchronization channel, and so on.
CLKIN	Input	NC
CLKOUT	Output	NC
AGND	GND	Analog ground
DGND	GND	Digital ground
ATR	Input	NC
DTR	Input	NC

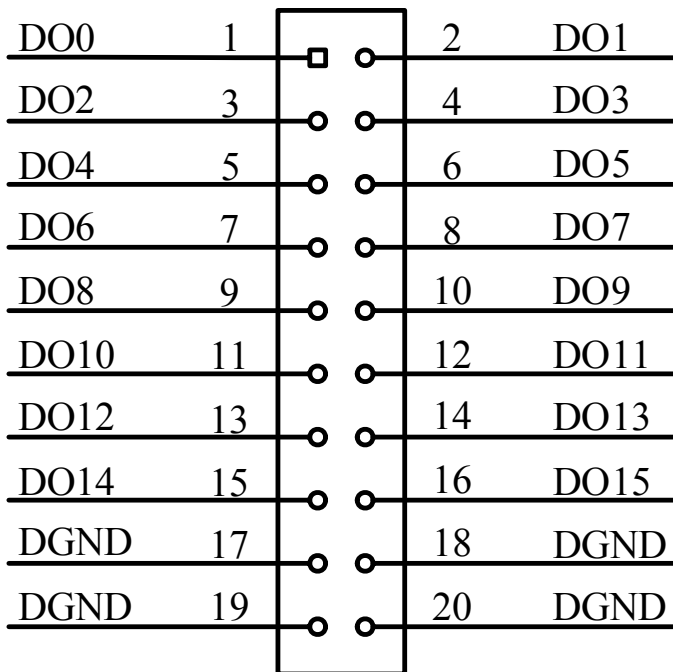
3.2 Digital Input Connector



20-pin definition

Pin Name	Direction	Description
DI0~DI15	Input	Digital input.
DGND	GND	Digital ground.

3.3 Digital Output Connector



Pin Name	Direction	Description
DO0~DO15	Output	Digital output.
DGND	GND	Digital ground.

Chapter 4 Each Signal Connection Method

4.1 AD Single-ended Input Connection

Single-ended mode can achieve a signal input by one channel, and several signals use the common reference ground. This mode is widely applied in occasions of the small interference and relatively many channels.

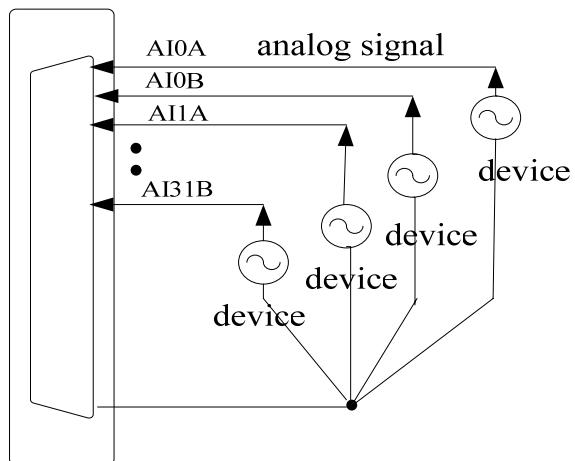
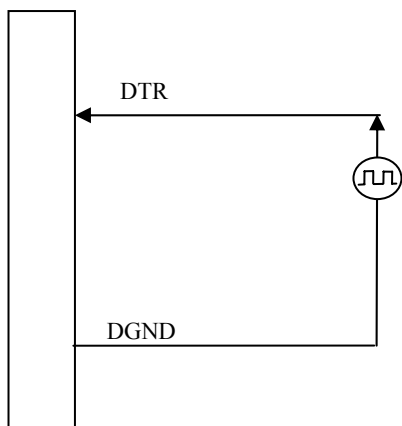
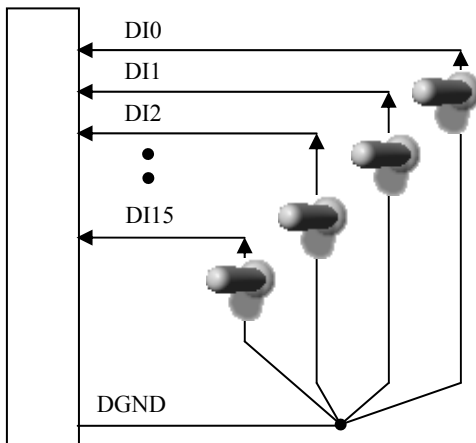


Figure 4.1 single-ended input connection

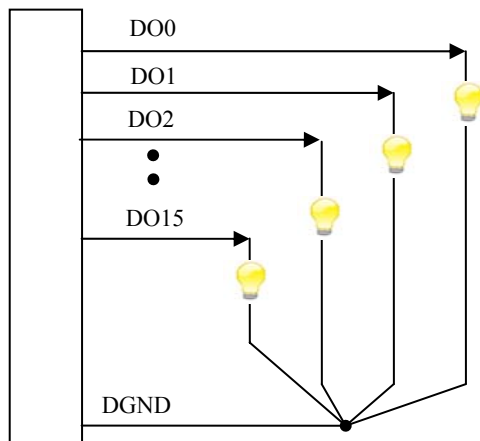
4.2 Trigger signal input



4.3 Digital Input



4.4 Digital Output

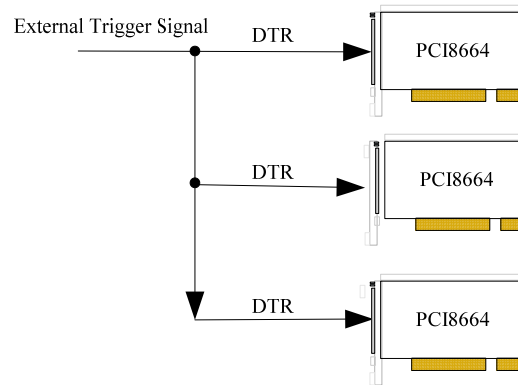


4.5 Methods of Realizing the Multi-card Synchronization

We can use common external trigger to realize the synchronization for the PCI8664.

When using the common external trigger, please make sure all parameters of different PCI8664 are the same. At first, configure hardware parameters, and use analog or digital signal triggering (DTR), then connect the signal that will be sampled by PCI8664, input triggering signal from DTR pin, then click “Start” button, at this time, PCI8664 does not sample any signal but waits for external trigger signal. When each module is waiting for external trigger signal, use the

common external trigger signal to startup modules, at last, we can realize synchronization data acquisition in this way. See the following figure:



Chapter 5 The Instruction Trigger Function

5.1 Internal Trigger Mode

When A/D is in the initialization, if the hardware parameter ADPara.TriggerMode = PCI8664_TRIGMODE_SOFT, we can achieve the internal trigger acquisition. In this function, when calling the StartDeviceProAD function, it will generate A/D start pulse, A/D immediately access to the conversion process and not wait for the conditions of any other external hardware. It also can be interpreted as the software trigger.

As for the specific process, please see the figure below, the cycle of the A/D work pulse is decided by the sampling frequency.

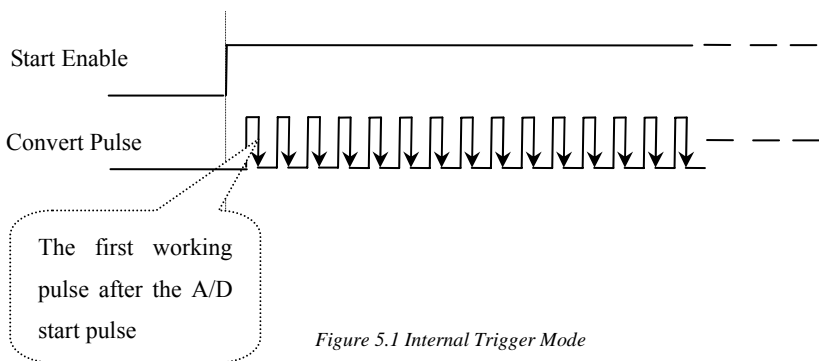


Figure 5.1 Internal Trigger Mode

5.2 External Trigger Mode

When A/D is in the initialization, if the hardware parameter ADPara.TriggerMode = PCI8664_TRIGMODE_DELAY or ADPara.TriggerMode-PCI8664_TRIGMODE_MIDL, we can achieve the external trigger acquisition. In this function, when calling the StartDeviceProAD function, A/D will not immediately access to the conversion process but wait for the external trigger source signals accord with the condition, then start converting the data. It also can be interpreted as the hardware trigger. Trigger source includes the DTR (Digital Trigger Source) .

The trigger modes include the edge trigger and level trigger.

(1) Edge trigger function

Edge trigger is to capture the characteristics of the changes between the trigger source signal and the trigger level signal to trigger AD conversion.

When ADPara.TriggerDir = PCI8664_TRIGDIR_NEGATIVE, choose the trigger mode as the falling edge trigger. That is, when the DTR trigger signal is on the falling edge, AD will immediately access to the conversion process, and its follow-up changes have no effect on AD acquisition.

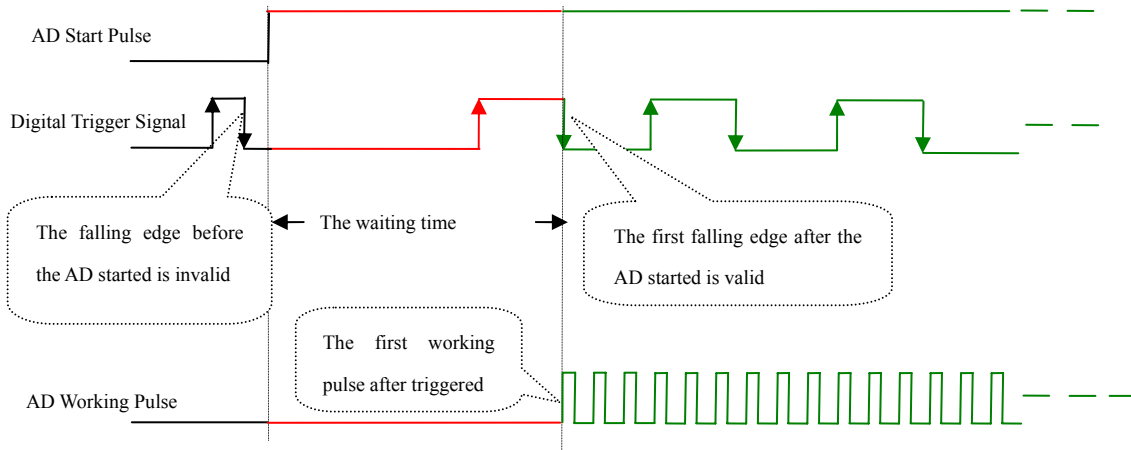


Figure 5.2.1 Falling edge trigger when trigger source is DTR

When ADPara.TriggerDir = PCI8664_TRIGDIR_POSITIVE, choose the trigger mode as rising edge trigger. That is, when the DTR trigger signal is on the rising edge, AD will immediately access to the conversion process, and its follow-up changes have no effect on AD acquisition.

When ADPara.TriggerDir = PCI8664_TRIGDIR_POSIT_NEGAT, choose the trigger mode as rising or falling edge trigger. That is, when the DTR trigger signal is on the rising or falling edge, AD will immediately access to the conversion process, and its follow-up changes have no effect on AD acquisition. This function can be used in the case that the acquisition will occur if the exoteric signal changes.

(2) Triggering level function

Level trigger is to capture the condition that trigger signal is higher or lower than the trigger level to trigger AD conversion.

When ADPara.TriggerDir = PCI8664_TRIGDIR_NEGATIVE, it means the trigger level is low. When DTR trigger signal is in low level, AD is in the conversion process, once the trigger signal is in the high level, AD conversion will automatically stop, when the trigger signal is in the low level again, AD will re-access to the conversion process, that is, only converting the data when the trigger signal is in the low level.

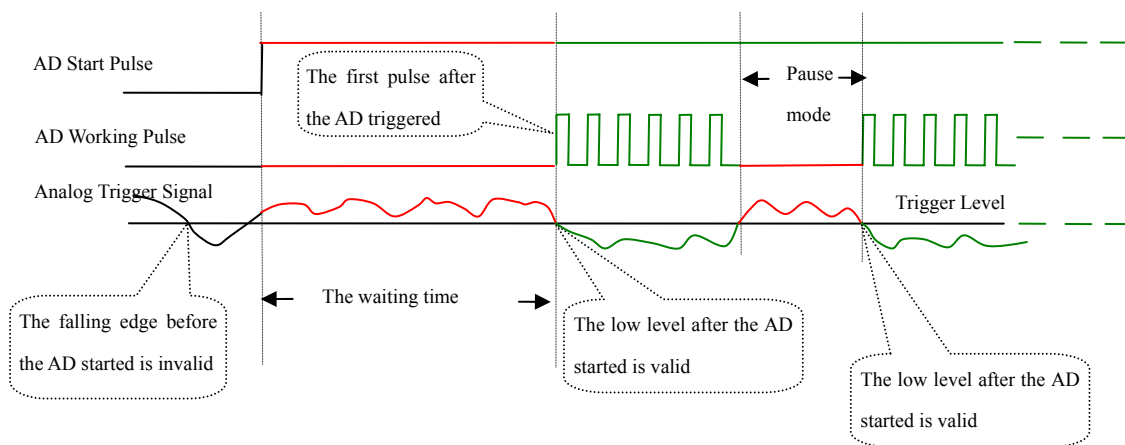


Figure 5.2.2 Low level trigger when trigger source is ATR

When `ADPara.TriggerDir = PC8664_TRIGDIR_POSITIVE`, it means the trigger level is high. When DTR trigger signal is in high level, AD is in the conversion process, once the trigger signal is in the low level, AD conversion will automatically stop, when the trigger signal is in the high level again, AD will re-access to the conversion process, that is, only converting the data when the trigger signal is in the high level.

When `ADPara.TriggerDir = PC8664_TRIGDIR_POSIT_NEGAT`, the effect is the same as the internal software trigger.

5.3 Methods of Using AD Continuum and Grouping Sampling Function

5.3.1 AD Continuum Sampling Function

The continuous acquisition function means the sampling periods for every two data points are completely equal in the sampling process of AD, that is, completely uniform speed acquisition, without any pause, so we call that continuous acquisition.

To use the continuous acquisition function, the hardware parameters `ADPara.ADMode = PCI8664_ADMODE_SEQUENCE` should be installed in the software. For example, in the internal clock mode, hardware parameters `ADPara.Frequency = 100000 (100KHz)` should be installed, and 10 microseconds after the AD converts the first data point, the second data point conversion starts, and then 10 microseconds later the third data point begins to convert, and so on.

5.3.2 AD Grouping Sampling Function

Grouping acquisition (pseudo-synchronous acquisition) function refers to the sampling clock frequency conversion among the channels of the group in the AD sampling process, and also a certain waiting time exists between every two groups, this period of time is known as the Inter-group Spacing. Cycles of Group refers to numbers of the cycle acquisition for each channel in the same group. In the internal clock mode and the fixed-frequency external clock mode, the time between the groups is known as group cycles. The conversion process of this acquisition mode as follows: a short time stop after the channels conversion in the group (that is, Inter-group Group Interval), and then converting the next group, followed by repeated operations in order, so we call it grouping acquisition.

The purpose of the application of the grouping acquisition is that: at a relatively slow frequency, to ensure that all of the time difference between channels to become smaller in order to make the phase difference become smaller, thus to ensure the synchronization of the channels, so we also say it is the pseudo-synchronous acquisition function. In a group, the higher the sampling frequency is, the longer inter-group interval is, and the better the relative synchronization signal is. The sampling frequency in a group depends on `ADPara.Frequency`, the cycles of a group depends on `ADPara.Loops of Group` and the inter-group interval depend on `ADPara.Group Interval`.

Based on the grouping function, it can be divided into the internal clock mode and the external clock mode. Under the internal clock mode, the group cycle is decided by the internal clock sampling period, the total number of sampling channels, group cycles and inter-group interval together. In each cycle of a group, AD only collects a set of data. Under the external clock mode, $\text{external clock cycle} \geq \text{internal clock sampling cycle} \times \text{the total number of sampling channels} \times \text{cycles of Group} + \text{AD chip conversion time}$, AD data acquisition is controlled and triggered by external clock. The

external clock mode is divided into fixed frequency external clock mode and unfixed frequency external clock mode. Under the fixed frequency external clock mode, the group cycle is the sampling period of the external clock.

The formula for calculating the external signal frequency is as follows:

Under the internal clock mode:

Group Cycle = the internal clock sampling period × the total number of sample channels × group cycles + AD chips conversion time + inter-group interval

External signal cycle = (cycle signal points / group cycles) × Group cycle

External signal frequency = 1 / external signal cycle

Under the external clock mode: (a fixed-frequency external clock)

Group Cycle = external clock cycle

External signal cycle = (cycle signal points / group cycles) × group cycle

External signal frequency = 1 / external signal cycle

Formula Notes:

The internal sampling clock cycle = 1 / (AD Para. Frequency)

The total number of sampling channels = AD Para. Last Channel – AD Para. First Channel + 1

Cycles of Group = AD Para. Loops of Group

AD Chips conversion time = see "AD Analog Input Function" parameter

Inter-group interval = AD Para. Group Interval

Signal Cycle Points = with the display of the waveform signal in test procedures, we can use the mouse to measure the signal cycle points.

Under the internal clock mode, for example, sample two-channel 0, 1, and then 0 and 1 become a group. Sampling frequency (Frequency) = 100000Hz (cycle is 10us), cycles of group is 1, inter-group interval (Group Interval) = 50us, then the acquisition process is to collect a set of data first, including a data of channel 0 and a data of channel 1. We need 10uS to sample the two data, 20uS to convert the data from the two channels. After the conversion time of an AD chip, AD will automatically cut-off to enter into the waiting state until the 50uS group interval ends. We start the next group, begin to convert the data of channel 0 and 1, and then enter into the waiting state again, and the conversion is going on in this way, as the diagram following shows:

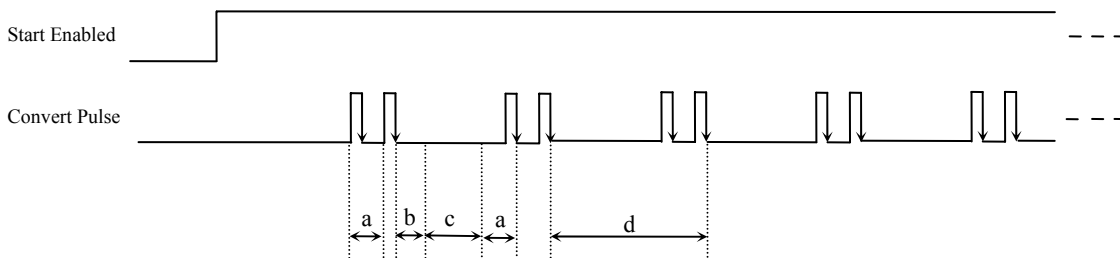


Figure 6.1 Grouping Sampling which grouping cycle No is 1 under the Internal Clock Mode

- Note: a— internal clock sample cycle
- b— AD chips conversion time
- c— inter-group interval

d— group cycle

Change the group cycles into 2, then the acquisition process is to collect the first set of data, including two data of channel 0 and two data of channel 1, the conversion order is 0,1,0,1. We need 10uS to sample each of the four data. After the conversion time of an AD chip, AD will automatically stop to enter into the waiting state until the 50uS group interval ends. We start the next group, begin to convert the data of channel 0 and 1, and then enter into the waiting state again, and the conversion is going on in this way, as the diagram following shows:

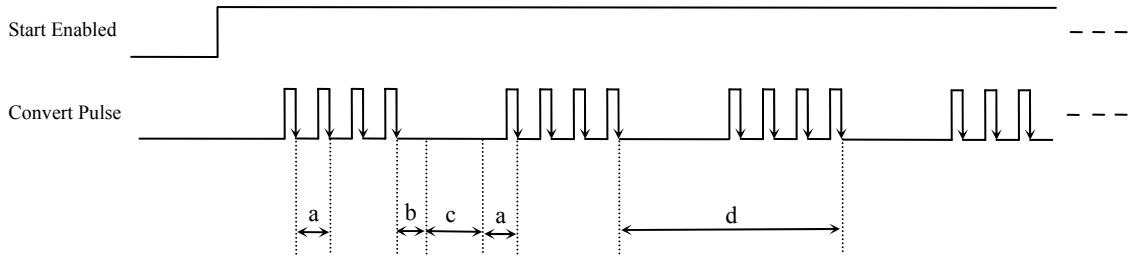


Figure 6.2 Grouping Sampling which grouping cycle No is 2 under the Internal Clock Mode

- Note:
- a— internal clock sample cycle
 - b— AD chips conversion time
 - c— inter-group interval
 - d— group cycle

Chapter 6 Note and Warranty Policy

6.1 Notes

In our products' packing, user can find a user manual, a PCI8664 module and a quality guarantee card. Users must keep quality guarantee card carefully, if the products have some problems and need repairing, please send products together with quality guarantee card to ART, we will provide good after-sale service and solve the problem as quickly as we can. When using PCI8664, in order to prevent the IC (chip) from electrostatic harm, please do not touch IC (chip) in the front panel of PCI8664 module.

6.2 Analog Signal Input Calibration

Every device has to be calibrated before sending from the factory. It is necessary to calibrate the module again if users want to after using for a period of time or changing the input range. PCI8664 default input range: $\pm 10V$, in the manual, we introduce how to calibrate PCI8664 in $\pm 10V$, calibrations of other input ranges are similar.

Prepare a digital voltage instrument which the resolution is more than 5.5 bit, install the PCI8664 module, and then power on, warm-up for fifteen minutes.

- 1) Zero adjustment: select one pair of analog inputs, take the AI0A and AI0B for example, connect 0V to AI0A and AI0B, and then run ART Data Acquisition Measurement Suite in the WINDOWS. Choose channel 0 pair, adjust potentiometer RP3 in order to make the voltage of AI0A is 0.000V, adjust potentiometer RP2 in order to make the voltage of AI0B is 0.000V. Zero adjustment of other channels is alike.
- 2) Full-scale adjustment: select one pair of analog inputs, take the AI0A and AI0B for example, connect 10V to AI0A and AI0B, and then run ART Data Acquisition Measurement Suite in the WINDOWS. Choose channel 0 pair, adjust potentiometer RP5 in order to make the voltage of AI0A is 9995.11mV, adjust potentiometer RP4 in order to make the voltage of AI0B is 9995.11mV. Full-scale adjustment of other channels is alike.
- 3) Repeat steps above until meet the requirement.
- 4) Trigger level calibration: When use trigger function, Users can set trigger level from 0 to 10V, by measuring the board's test points ARTDA, we can measure the voltage of trigger level, adjusting the potentiometer RP1 to make the trigger level that is measured and the trigger level that is set are the same value.

6.3 Warranty Policy

Thank you for choosing ART. To understand your rights and enjoy all the after-sales services we offer, please read the following carefully.

1. Before using ART's products please read the user manual and follow the instructions exactly. When sending in damaged products for repair, please attach an RMA application form which can be downloaded from: www.art-control.com.
2. All ART products come with a limited two-year warranty:
 - The warranty period starts on the day the product is shipped from ART's factory
 - For products containing storage devices (hard drives, flash cards, etc.), please back up your data before sending them for repair. ART is not responsible for any loss of data.
 - Please ensure the use of properly licensed software with our systems. ART does not condone the use of pirated software and will not service systems using such software. ART will not be held legally responsible for products

shipped with unlicensed software installed by the user.

3. Our repair service is not covered by ART's guarantee in the following situations:

- Damage caused by not following instructions in the User's Manual.
- Damage caused by carelessness on the user's part during product transportation.
- Damage caused by unsuitable storage environments (i.e. high temperatures, high humidity, or volatile chemicals).
- Damage from improper repair by unauthorized ART technicians.
- Products with altered and/or damaged serial numbers are not entitled to our service.

4. Customers are responsible for shipping costs to transport damaged products to our company or sales office.

5. To ensure the speed and quality of product repair, please download an RMA application form from our company website.

Products Rapid Installation and Self-check

Rapid Installation

Product-driven procedure is the operating system adaptive installation mode. After inserting the disc, you can select the appropriate board type on the pop-up interface, click the button **【driver installation】** ; or select CD-ROM drive in Resource Explorer, locate the product catalog and enter into the APP folder, and implement Setup.exe file. After the installation, pop-up CD-ROM, shut off your computer, insert the PCI card. If it is a USB product, it can be directly inserted into the device. When the system prompts that it finds a new hardware, you do not specify a drive path, the operating system can automatically look up it from the system directory, and then you can complete the installation.

Self-check

At this moment, there should be installation information of the installed device in the Device Manager (when the device does not work, you can check this item.). Open "Start -> Programs -> ART Demonstration Monitoring and Control System -> Corresponding Board -> Advanced Testing Presentation System", the program is a standard testing procedure. Based on the specification of Pin definition, connect the signal acquisition data and test whether AD is normal or not. Connect the input pins to the corresponding output pins and use the testing procedure to test whether the switch is normal or not.

Delete Wrong Installation

When you select the wrong drive, or viruses lead to driver error, you can carry out the following operations: In Resource Explorer, open CD-ROM drive, run Others-> SUPPORT-> PCI.bat procedures, and delete the hardware information that relevant to our boards, and then carry out the process of section I all over again, we can complete the new installation.